



The Maplewood - R

3 Bedrooms and 2 Baths ♦ 1,360 sq. ft. of Living Space

Announcing a very practical ranch-style floor plan by Village Building Company with all the modern comforts everyone is looking for in today's housing market! The entry will welcome you with its open floor plan into the living room with a cathedral ceiling. The master suite is tucked away at the back of the house and comes complete with a private bathroom and a walk-in closet. Another full bathroom is perfectly located near the center of the house. You'll be amazed at this quaint, but large, eat-in kitchen. A "must have" pantry closet in the kitchen will come in handy for today's busy lifestyles! The 1st floor laundry room and 2-car garage complete this remarkable, ranch-style home.

Be sure to ask our sales associates for a list of other fine amenities available.

All of our homes come complete with the following amenities:

- ♦ Owens Corning Roofing
- ♦ Owens Corning Insulation
- ♦ Andersen Windows
- ♦ Therma-tru Front Doors
- ♦ Trane Furnances / AC Units
- ♦ 200 AMP Electric Service
- ♦ Watchdog Basement Waterproofing
- ♦ Custom Kitchen Cabinets
- ♦ Six Panel Interior Doors
- ♦ Custom Appliances
 - ♦ Range/Oven
 - ♦ Microwave
 - ♦ Dishwasher
- ♦ Complete Landscaping
- ♦ Concrete Patio
- ♦ Custom Kitchen Countertops

www.villagehomebuilders.com



VILLAGE
Building Company
VILLAGE
Home Realty, Inc.

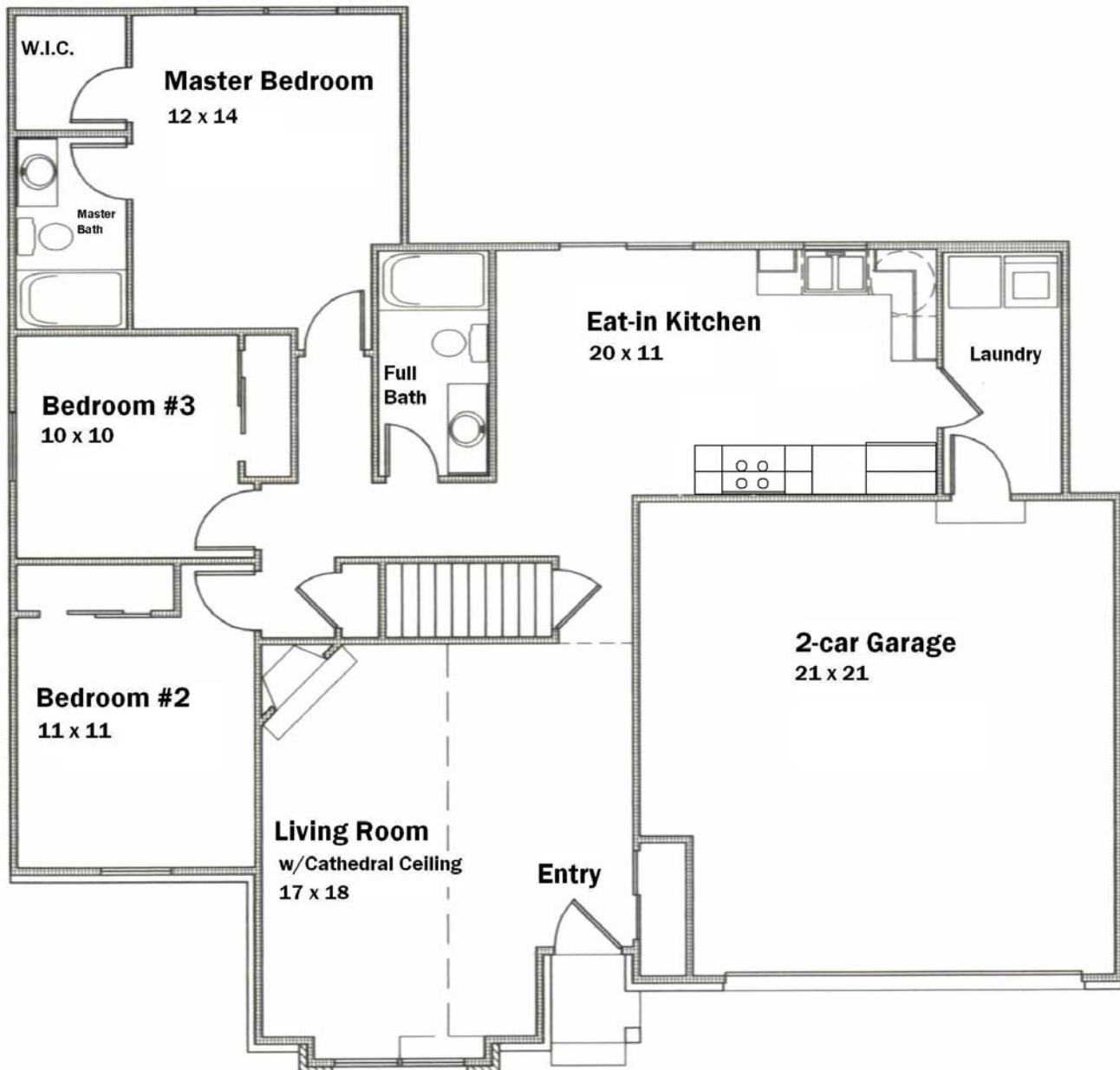
419 - 841 - 2268



The Maplewood - R

3 Bedrooms and 2 Baths ♦ 1,360 sq. ft. of Living Space

1,239 sq. ft. of Unfinished Basement with future expansion possibilities



NOTE: Artist's renderings and floor plans are shown to represent architectural concepts only. Standard or optional features may or may not be shown. Room sizes are approximate.

